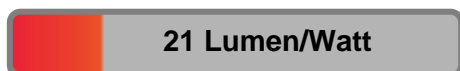


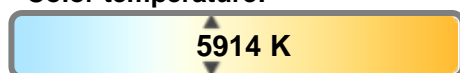
Light efficiency:



Light quality:



Color temperature:

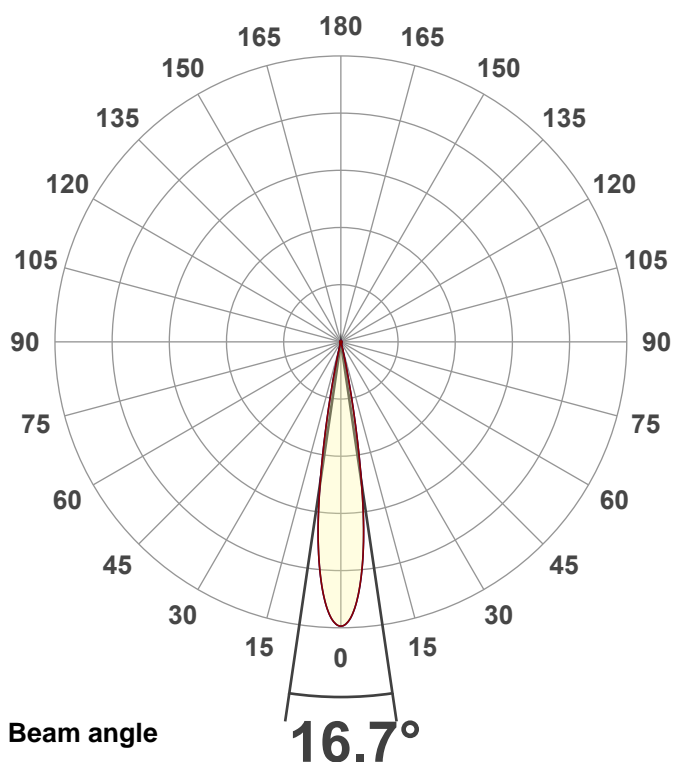


Output: 15284 lm
Peak: 122740 cd
Power: 733 W
PF: 1.0



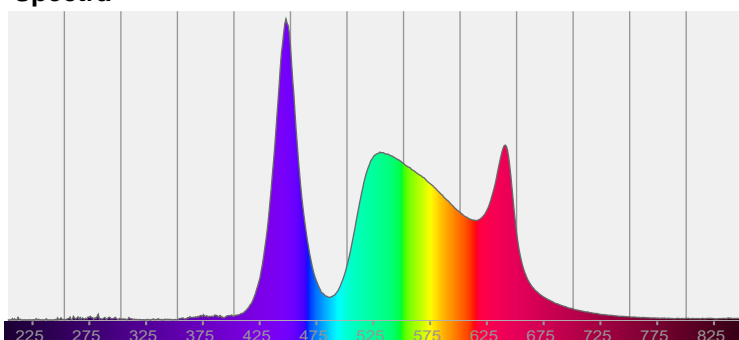
Product name:
Hydro Flex L19 (Zoom 50% 6500K)
Item number:

Date and time:
9/8/2025 9:10:36 AM

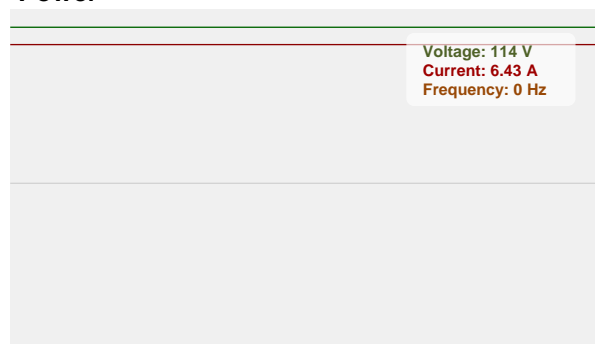


CIE 1931
x: 0.324
y: 0.336

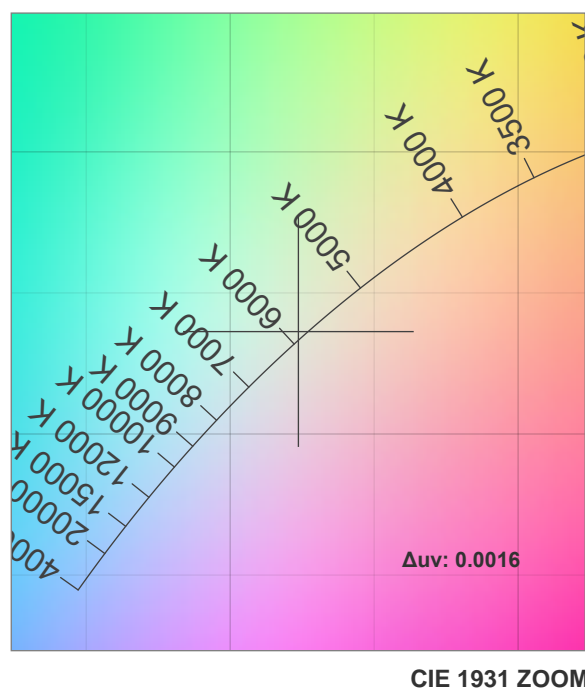
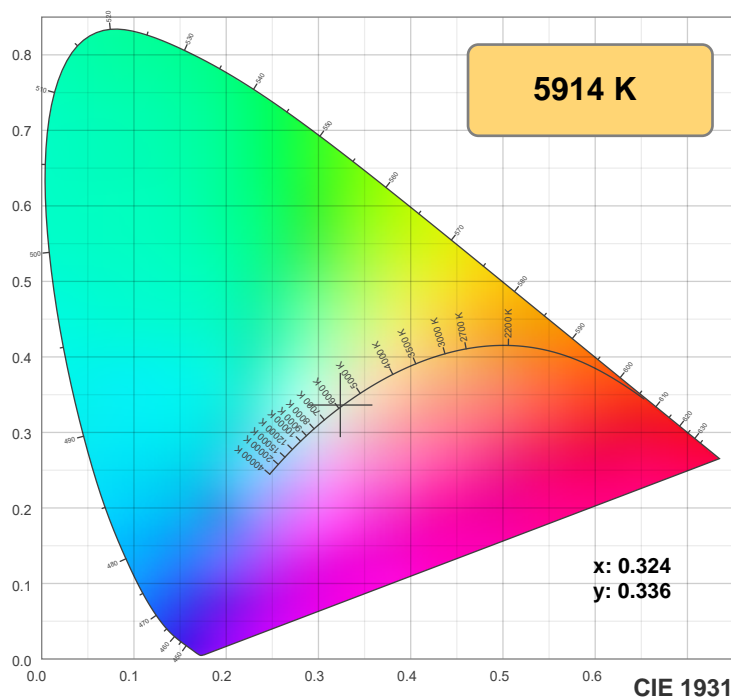
Spectra



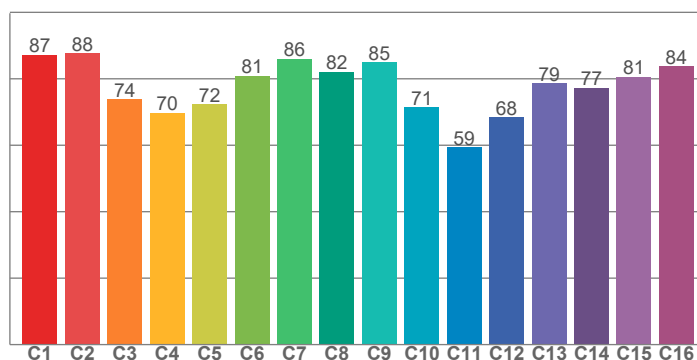
Power



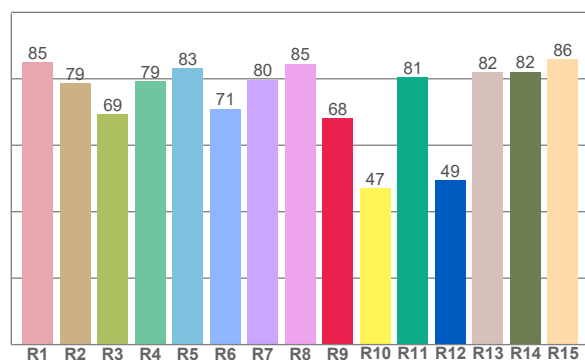
Color details



TM-30: 77.3



CRI: 78.9 (R1-R8)



CRI R values, only R1-R8 are used to calculate final CRI value

R1	R2	R3	R4	R5	R6	R7	R8	R9	R10	R11	R12	R13	R14	R15
85.1	78.6	69.3	79.2	83.3	71.0	79.7	84.5	68.1	47.0	80.6	49.4	81.9	82.2	85.9

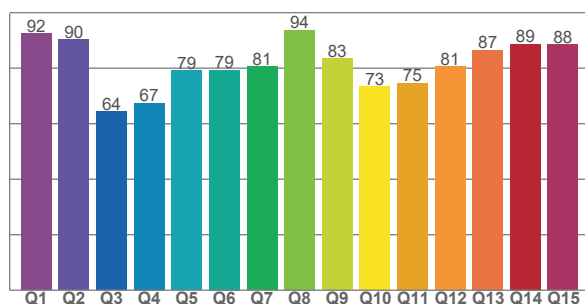
TM30 C values, 16 binned values out of total of 99 C values

C1	C2	C3	C4	C5	C6	C7	C8	C9	C10	C11	C12	C13	C14	C15	C16
87.2	87.6	73.7	69.7	72.3	80.9	86.0	82.1	84.9	71.5	59.3	68.4	78.6	77.3	80.6	83.8

CQS Q values

Q1	Q2	Q3	Q4	Q5	Q6	Q7	Q8	Q9	Q10	Q11	Q12	Q13	Q14	Q15
92.4	90.2	64.5	67.4	79.2	79.3	80.5	93.8	83.4	73.3	74.6	80.5	86.6	88.7	88.5

CQS: 79.6



Color parameters

Color temperature	Color rendering index	Red component	Color fidelity	Color gamut	Color quality scale	Color coordinate cie 1931	Color coordinate cie 1931	Color coordinate	Color coordinate	Color deviation from black body
CCT	CRI	CRI R9	TM30 Rf	TM30 Rg	CQS	x	y	u	v	Δuv
5914 K	78.9	68.1	77.3	103.8	79.6	0.324	0.336	0.203	0.316	0.0016

TM-30 details

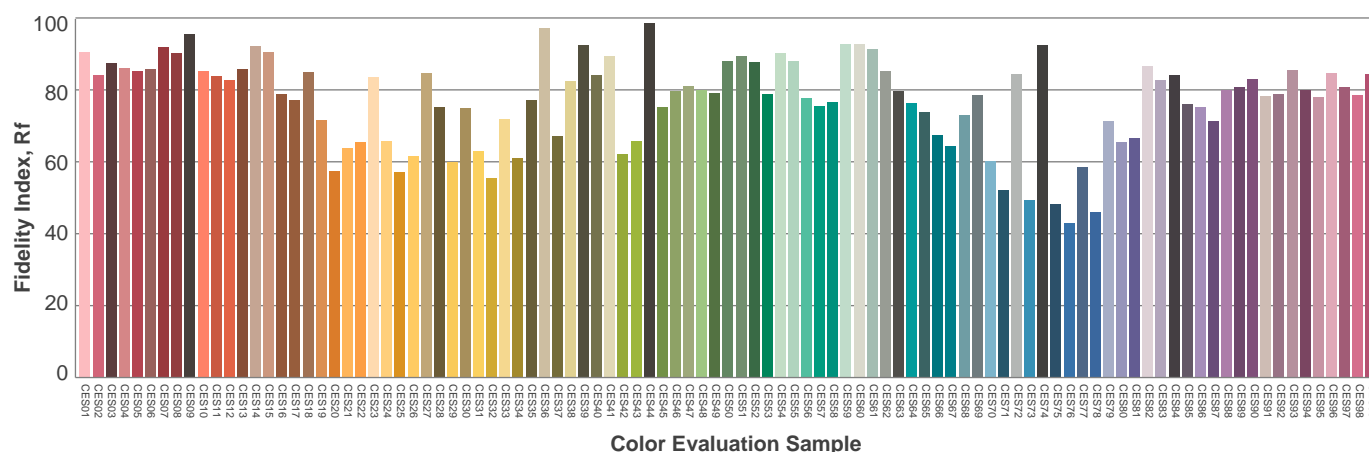
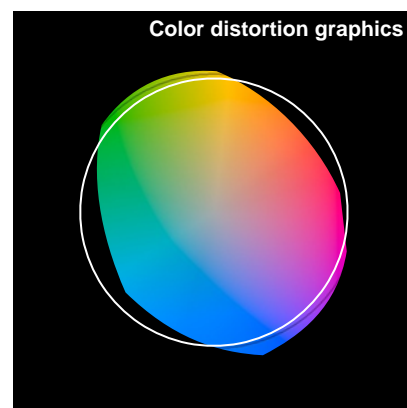
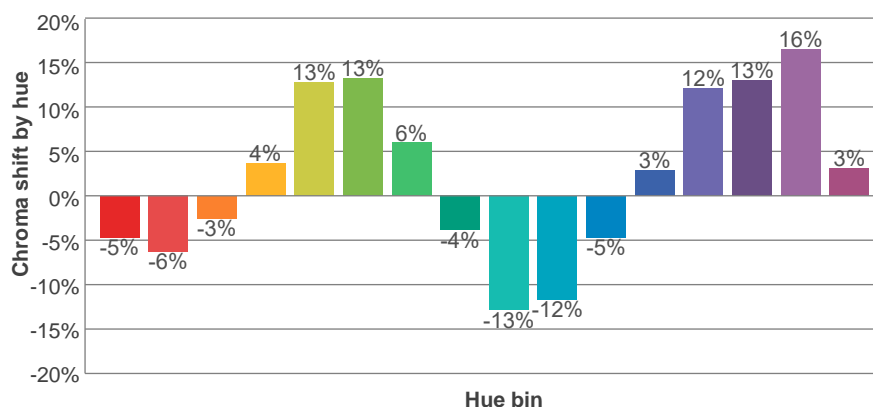
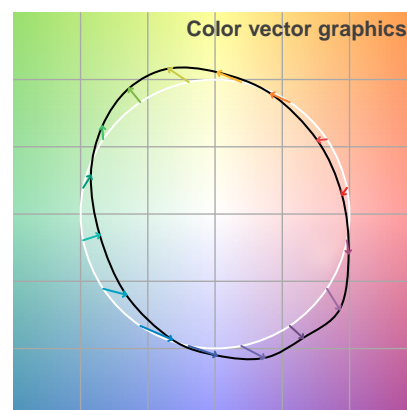
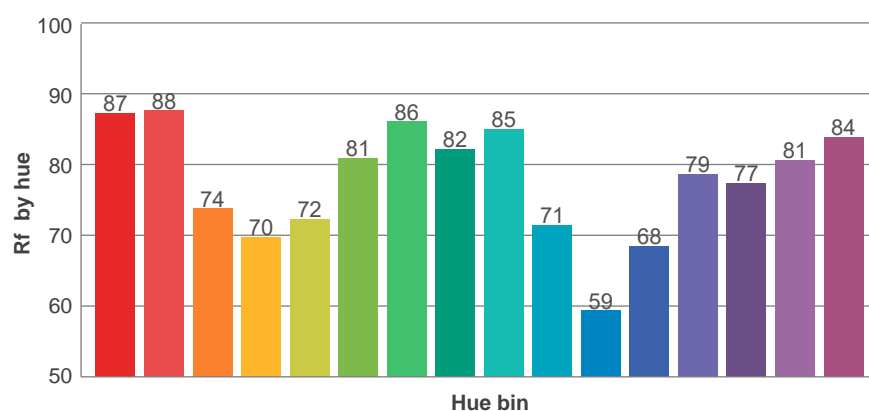
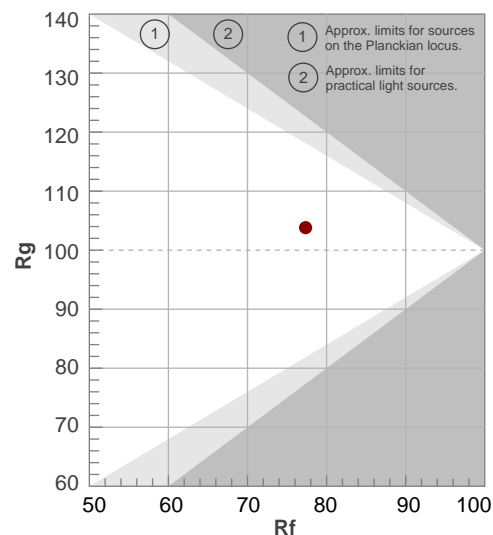
Rf 77.3

Fidelity index Rf

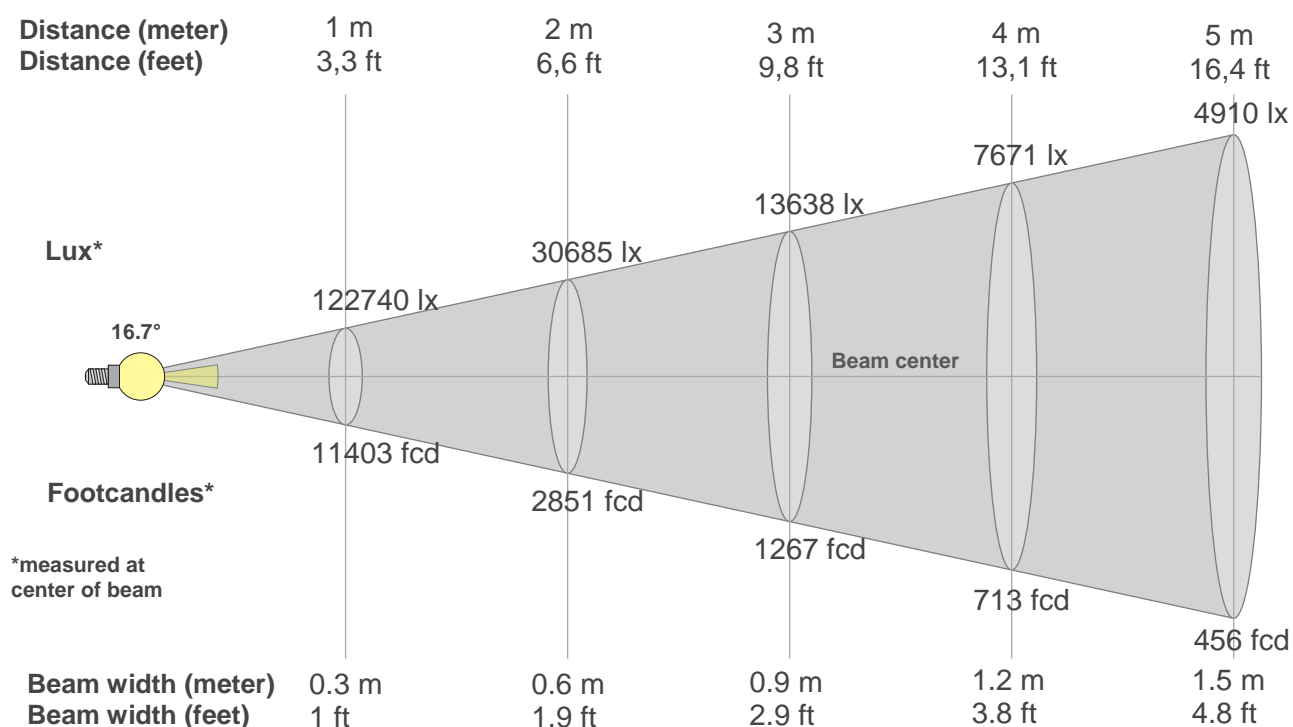
Rg 103.8

Gamut index Rg

Hue Bin	Ri	Shifts (%)	
		Chroma	Hue
1	87	-5%	-4%
2	88	-6%	3%
3	74	-3%	15%
4	70	4%	19%
5	72	13%	13%
6	81	13%	1%
7	86	6%	-8%
8	82	-4%	-10%
9	85	-13%	-2%
10	71	-12%	13%
11	59	-5%	25%
12	68	3%	22%
13	79	12%	15%
14	77	13%	3%
15	81	16%	-7%
16	84	3%	-9%



Beam details



Beam intensities from 1-20m

1m	2m	3m	4m	5m	6m	7m	8m	9m	10m	11m	12m	13m	14m	15m	16m	17m	18m	19m	20m
3.3ft	6.6ft	9.8ft	13.1ft	16.4ft	19.7ft	23ft	26.2ft	29.5ft	32.8ft	36.1ft	39.4ft	42.7ft	45.9ft	49.2ft	52.5ft	55.8ft	59.1ft	62.3ft	65.6ft
122740lx	30685lx	13638lx	7671lx	4910lx	3409lx	2505lx	1918lx	1515lx	1227lx	1014lx	852lx	726lx	626lx	546lx	479lx	425lx	379lx	340lx	307lx
11402.9 fcd	2850.7 fcd	1267 fcd	712.7 fcd	456.1 fcd	316.7 fcd	232.7 fcd	178.2 fcd	140.8 fcd	114 fcd	94.2 fcd	79.2 fcd	67.5 fcd	58.2 fcd	50.7 fcd	44.5 fcd	39.5 fcd	35.2 fcd	31.6 fcd	28.5 fcd

Intensities in 0° c-plane

0°	1°	2°	3°	4°	5°	6°	7°	8°	9°	10°	11°	12°	13°	14°	15°	16°	17°	18°	19°
123k	122k	119k	115k	109k	101k	92k	80k	67k	51k	36k	23k	12k	6k	2k	1k	1k	1k	1k	1k
100%	99%	97%	94%	89%	82%	75%	66%	54%	42%	29%	18%	10%	5%	2%	1%	1%	1%	1%	0%

Intensities in 90° c-plane

0°	1°	2°	3°	4°	5°	6°	7°	8°	9°	10°	11°	12°	13°	14°	15°	16°	17°	18°	19°
123k	122k	119k	115k	109k	101k	92k	80k	67k	51k	36k	23k	12k	6k	2k	1k	1k	1k	1k	1k
100%	99%	97%	94%	89%	82%	75%	66%	54%	42%	29%	18%	10%	5%	2%	1%	1%	1%	1%	0%

Intensities in 180° c-plane

0°	1°	2°	3°	4°	5°	6°	7°	8°	9°	10°	11°	12°	13°	14°	15°	16°	17°	18°	19°
123k	122k	119k	115k	109k	101k	92k	80k	67k	51k	36k	23k	12k	6k	2k	1k	1k	1k	1k	1k
100%	99%	97%	94%	89%	82%	75%	66%	54%	42%	29%	18%	10%	5%	2%	1%	1%	1%	1%	0%

Intensities in 270° c-plane

0°	1°	2°	3°	4°	5°	6°	7°	8°	9°	10°	11°	12°	13°	14°	15°	16°	17°	18°	19°
123k	122k	119k	115k	109k	101k	92k	80k	67k	51k	36k	23k	12k	6k	2k	1k	1k	1k	1k	1k
100%	99%	97%	94%	89%	82%	75%	66%	54%	42%	29%	18%	10%	5%	2%	1%	1%	1%	1%	0%

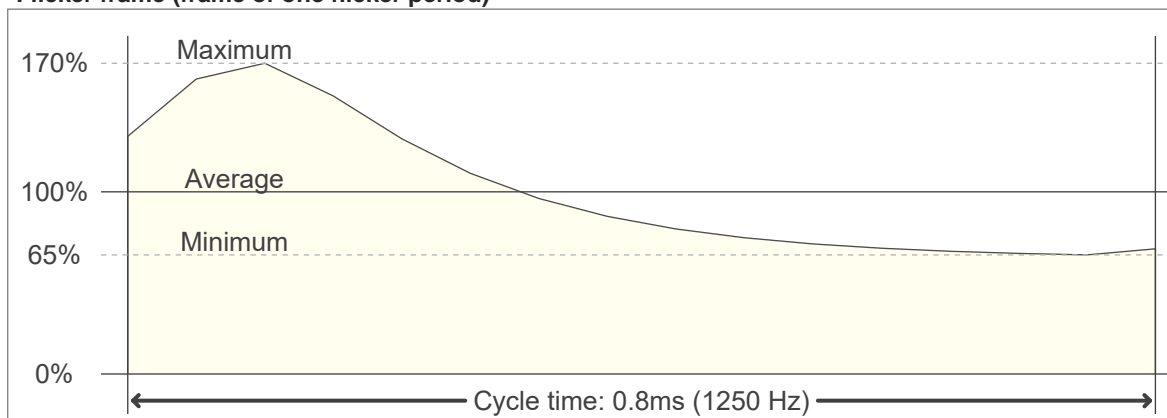
Beam angle 50%	Field angle 10%	Cutoff angle 2,5%	Intensity ratio in 120° cone	Intensity ratio in 90° cone
16.7°	24°	27.5°	69.3%	64.5%

Flicker

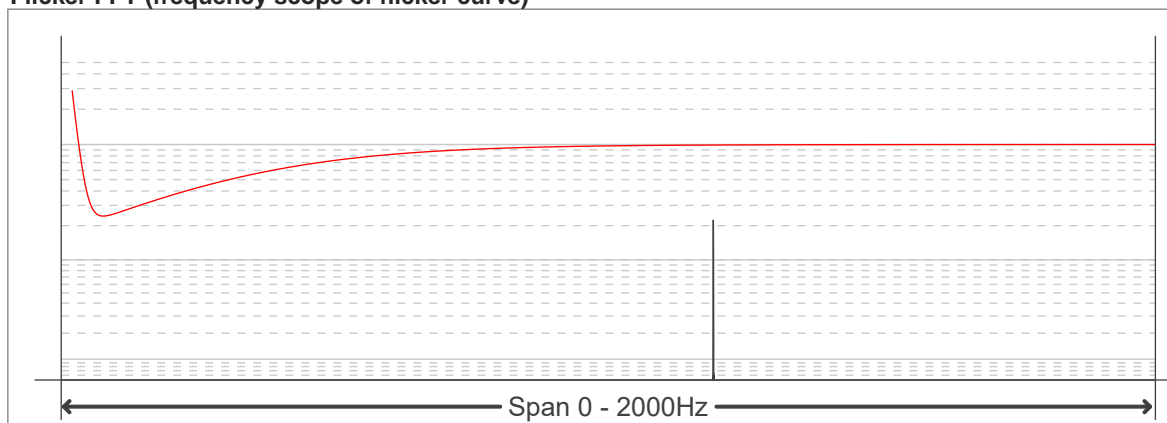
Flicker curve (complete sampled flicker signal)



Flicker frame (frame of one flicker period)



Flicker FFT (frequency scope of flicker curve)



Flicker results:

Flicker frequency:		1250 Hz	
Flicker index:	0.16	JA8/10 40Hz	0.51 %
Flicker percentage:	45.8 %	JA8/10 90Hz	1.14 %
SVM: (Visual flicker)	0.45	JA8/10 200Hz	2.52 %
PstLM	0	JA8/10 400Hz	5.07 %
Mp	0.11	JA8/10 1000Hz	14.4 %

Flicker conditions:

Sample rate:	20000 samples/second
--------------	----------------------